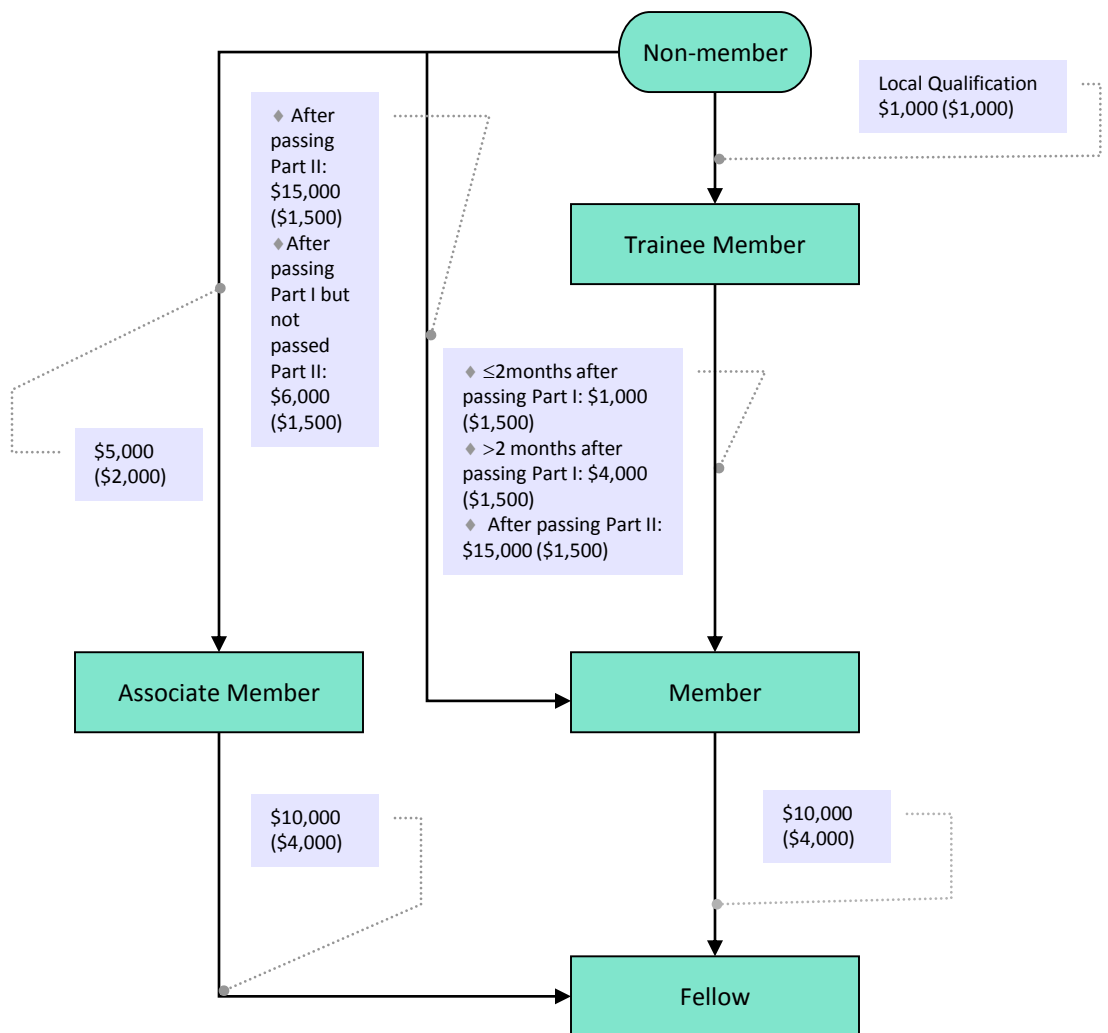


Flowchart of Admission and Fee



* (Amount refers to admission fee, bracket refers to subscription fee.)

The Trainee Members are encouraged to change their membership early to the status of Member. Special concession will be given to the Member and Associate Member when they are eligible to apply for Fellow.

For a **Trainee Member** who applies to be a :

- ◆ **Member within 2 months after passing Part I**, the cumulative admission fees on becoming a Fellow are \$11,000.
- ◆ **Member more than 2 months after passing Part I**, the cumulative admission fees on becoming a Fellow are \$14,000.
- ◆ **Member after passing Part II**, the cumulative admission fees on becoming a Fellow are \$25,000.

For an **Associate Member** who applies to be a Fellow when eligible, the admission fee is \$10,000.

For a **non-member** who applies to be a :

- ◆ **Member, after passing Part II** to complete the required Higher Training, the cumulative admission fees on becoming a Fellow are \$25,000.
- ◆ **Member, passed Part I** but has not passed Part II, the cumulative admission fees on becoming a Fellow are \$16,000.